



METEOR
SOLAR LED

PAVER / GROUND LIGHTS

www.meteor-lighting.com

It is the right time to think about renewable energy alternatives

More than ever before, it is time to find environmentally sound renewable energy alternatives. Meteor is one of a few companies that take the preservation of the environment to heart. In fact, Meteor develops, markets and distributes solar LED lights and other lighting products that more than match conventional architectural grade lights for quality and performance, with no wiring required. Meteor solar ground and paver lights make use of cleaner solar power technology in an innovative, sun-powered and self-contained design.

Harnessing solar energy

Solar energy or sun light is the power source used for Meteor's paver and ground lights. Each Meteor solar LED paver/ground light unit is completely self contained and self-powered, needing no external power and emitting no harmful CO2 to the environment. Simple to use, with no wiring required, Meteor lights can be easily incorporated into new or existing designs by the same workers who install the brickwork, paving or flooring material.

SOLAR PANEL

Type Crystalline panel
 Efficiency 12%~15%
 Lifetime Minimum 20 yrs

LED

Lifetime 100000 hrs
 Intensity (mcd) 3000~7000 mcd
 Luminance (lux) 30~300 lux
 Power consumption 0.036~0.06 W

ENVIRONMENT

Compressive strength Ground lights: 2818 lbs (min.)
 Paver lights: 9902 lbs (min.)
 Operating temperature .. -4°F~140°F / -20°C~60°C
 Storage temperature -40°F~176°F / -40°C~80°C
 Moisture protection IP68

Not your typical solar LED light

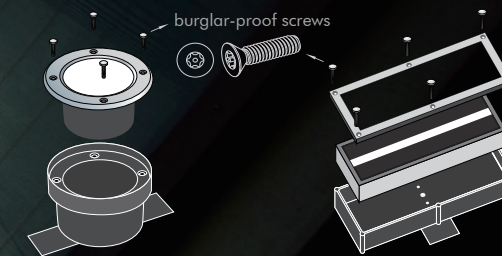
Meteor Solar LED lights are not your standard DIY solar lights that are planted in and around the garden or wall mounted. Meteor's stainless steel architectural grade lighting fixtures last for up to 10 years. The resiliency of the materials utilized in Meteor lights makes them suitable for high-end construction projects. The units have an SUS304 stainless steel cover, reinforced anti-skid glass outer construction that gives them a high load tolerance. Meteor lights utilize reliable power supply systems such as long lifespan ultracapacitor and Sanyo eneloop battery. With high load tolerance, submersible attributes, reliable power storage systems, LED light source and Tier 1 solar panels, these are solar LED lights you have never seen before.

Lighting efficiency progress from daytime to night time:



Anti-theft Anchor Plate

Every Meteor Solar LED lights come equipped with an anti-theft Anchor Plate. These plates not only deter theft, they also help prevent post-installation movement due to erosion or frost heaves.



Take a closer look at the comparison charts provided:

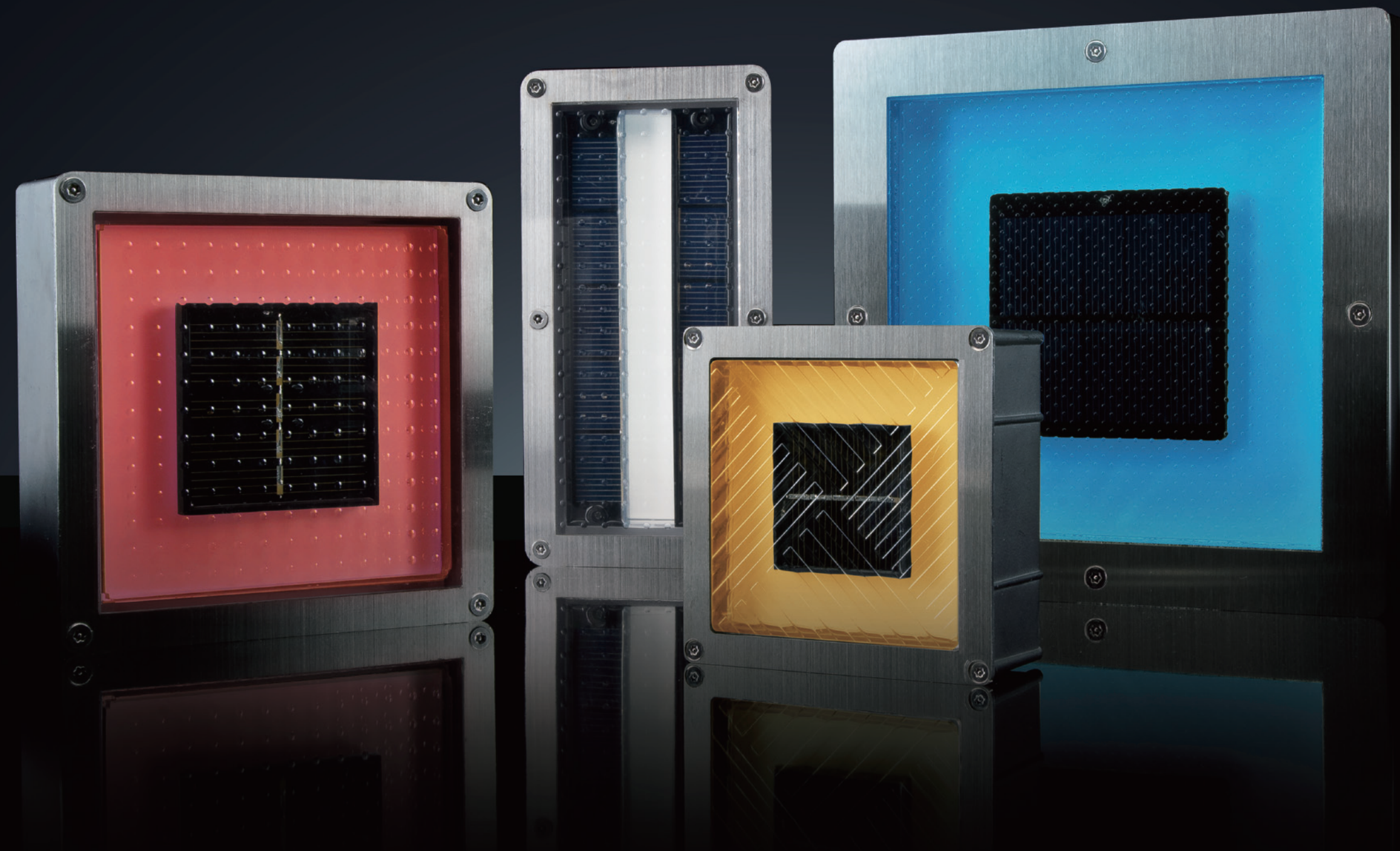
DIY SOLAR PRODUCT		METEOR SOLAR LED LIGHT
Plastic	MATERIAL	SUS304 stainless steel, cast aluminum
Plastic	LENS	GE high light permeable polycarbonate, high tensile tempered glass
Tier 2, tier 3 or recycled solar panel	SOLAR PANEL	Tier 1 high efficiency solar panel
Battery	POWER STORAGE	Ultracapacitor / Sanyo eneloop battery
None	IP RATING	IP68
No	OPTIC DESIGN	Yes
1-2 years	LIFE SPAN	7-10 years
Low	LOAD TOLERANCE	1-4 tons
Only function-driven	APPEARANCE	Functional and designed
5~6 hours	OPERATING TIME	Minimum 12 hours (fully charged)

CONVENTIONAL GROUND LIGHT		METEOR SOLAR LED LIGHT
SUS304 stainless steel	FINISH	SUS304 stainless steel
Cast aluminum	HOUSING	Cast aluminum
High tensile tempered glass	LENS	High tensile tempered glass, GE high light permeable polycarbonate
LED	LIGHT SOURCE	LED
Yes	IES FILE	Yes
IP65~IP68(less often)	INGRESS PROTECTION	All meet the IP68 standard
Very high	PRICING	1/2 of conventional ground light price
Very high	TOTAL INSTALLATION	Low

Needed	TRANSFORMER	No
Needed	WIRING	No
Needed	ELECTRICIAN	No
Very High	LABOR FEE	Minimum
Very often	MAINTENANCE	Minimum
Yes	UTILITY BILL	No



*Green lighting
that comes in
many colors!*



Lighting is about defining a mood, creating an atmosphere, setting a scene.

There is an art to good lighting. Brilliant, soft, transcending and romantic, Meteor LED lights are designed to suit different atmospheric preferences. From subtle hues and soft ambiance lighting to sharp focus points and dramatic structural lighting, different styles are achieved by adjusting the depth and angles at which the lights are placed in the case and by the type of pattern and/or finish of the high tensile tempered glass cover.



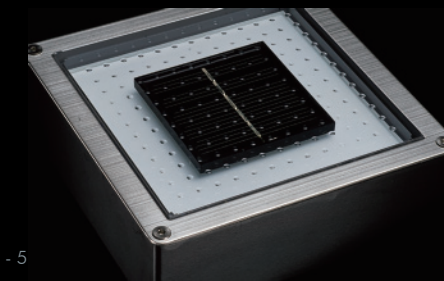
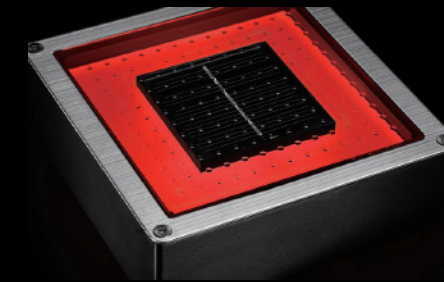
SH130C
Color - Lux (average)
White - 30, Amber - 25,
Red - 70, Blue - 20, Green - 60

SH130C

- paver light

Size	Edge L: 4.01" / 104 mm H: 1.81" / 46 mm
Weight	0.44 kg / 0.968 lbs
Housing	Stainless steel (SUS304), cast aluminum
Lens	GE super light permeable PC
Lighting output	Permanent
LED pcs	4 pcs
Finish	Brushed/polished stainless steel

Switch	Auto
Operation time	Minimum 12 hrs (fully charged) 4~8 hrs (overcast)
Full charge time	6 hrs (direct sunlight)



SH170C
Color - Lux (average)
White - 35, Amber - 25,
Red - 65, Blue - 25, Green - 5

SH170C

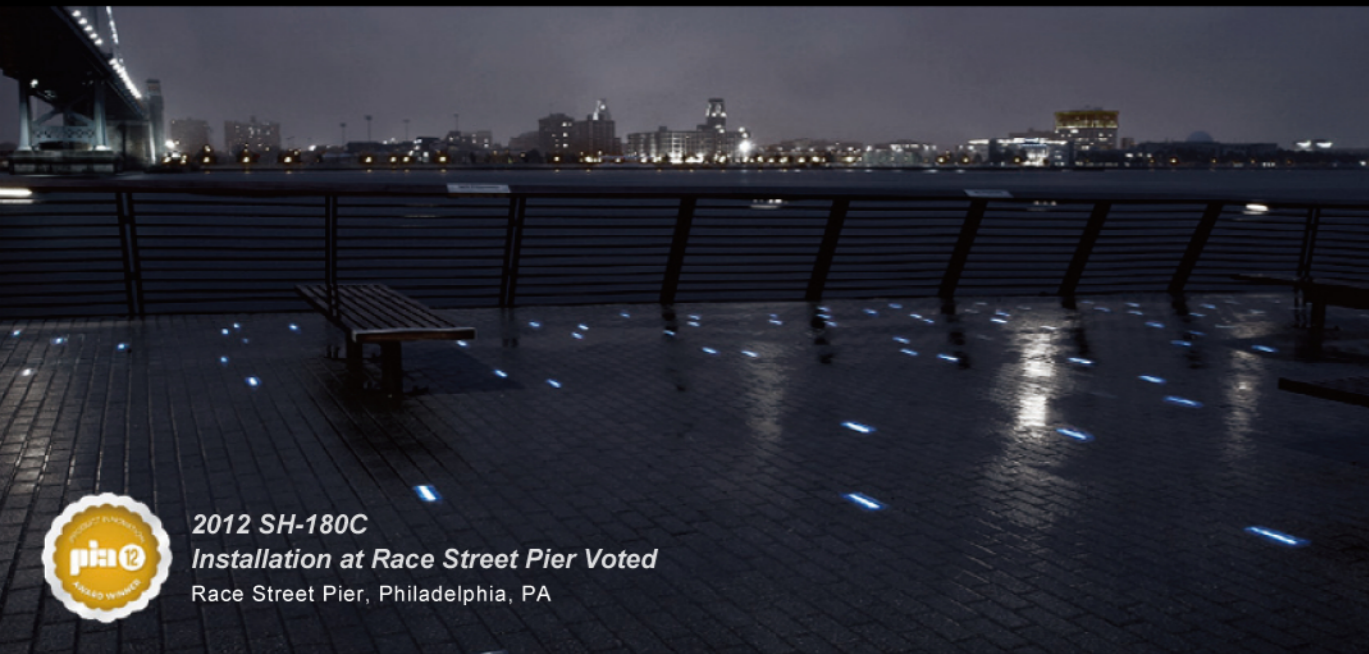
- paver light

Size	Edge L: 6.05" / 154 mm H: 2.1" / 53 mm
Weight	1.1 kg / 2.42 lbs
Housing	Stainless steel (SUS304), cast aluminum
Lens	GE super light permeable PC
Lighting output	Permanent
LED pcs	8 pcs
Finish	Brushed/polished stainless steel

Switch	Auto
Operation time	Minimum 12 hrs (fully charged) 4~8 hrs (overcast)
Full charge time	6 hrs (direct sunlight)



SH-170
St. Paul Street, Burlington, VT



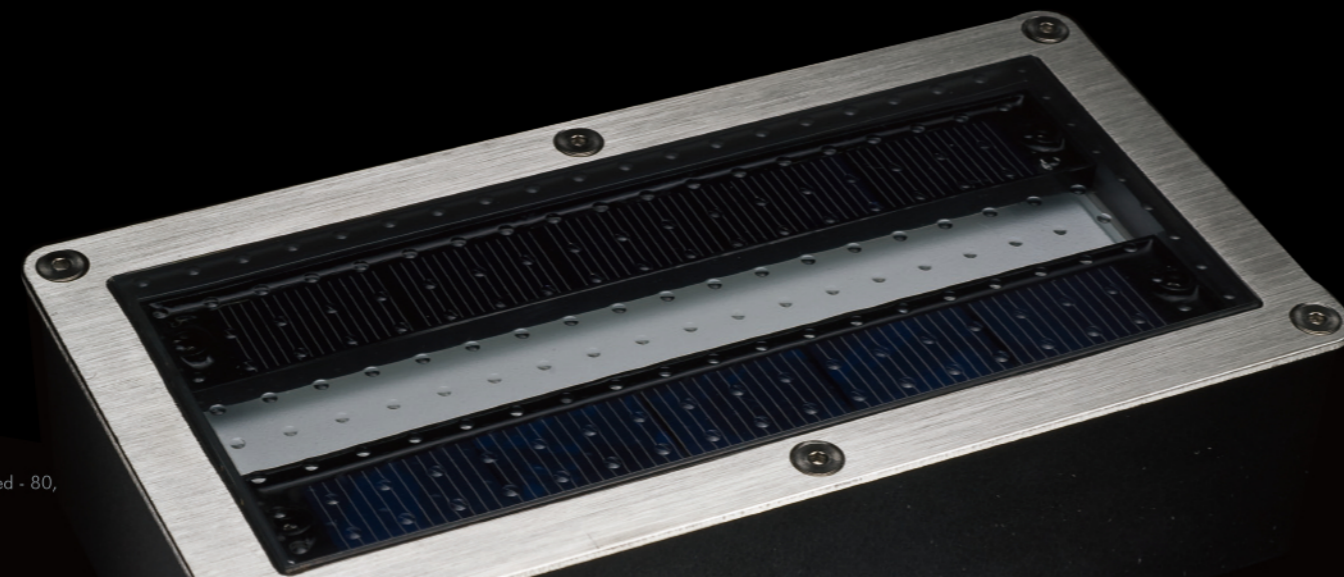
2012 SH-180C
Installation at Race Street Pier Voted
 Race Street Pier, Philadelphia, PA

SH180C

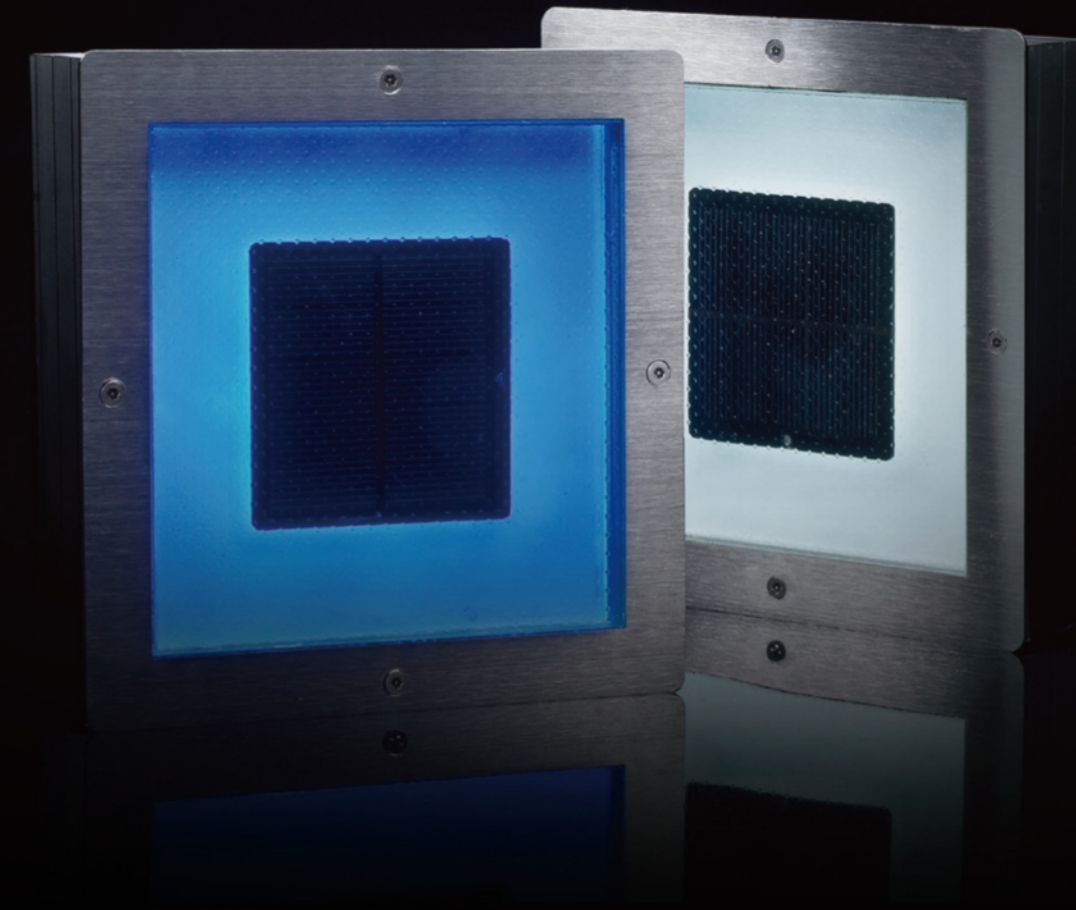
- paver light

Size	L: 7.9" / 200 mm W: 3.9" / 100 mm H: 2" / 50 mm
Weight	1.15 kg / 2.54 lbs
Housing	Stainless steel (SUS304), cast aluminum
Lens	GE super light permeable PC
Lighting output	Permanent
LED pcs	15 pcs
Finish	Brushed/polished stainless steel

Switch	Auto
Operation time	Minimum 12 hrs (fully charged) 4-8 hrs (overcast)
Full charge time	6 hrs (direct sunlight)

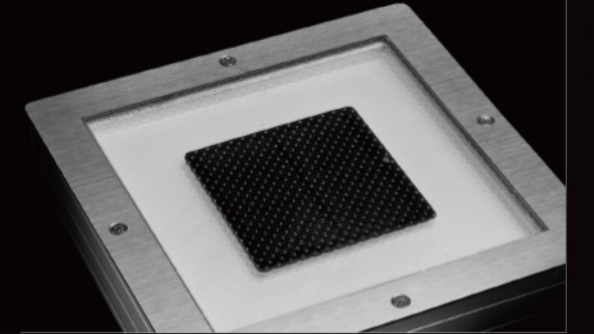


SH180C
 Color - Lux (average)
 White - 55, Amber - 40, Red - 80,
 Blue - 35, Green - 90



SH190C

Color - Lux (average)
 White - 38, Amber - 28, Red - 72,
 Blue - 28, Green - 55



SH190C

- paver light

Size	Edge L: 8.03" / 204 mm H: 1.85" / 47 mm
Weight	2.9 kg / 6.39 lbs
Housing	Extruded Cast aluminum
Lens	Tempered Glass
Lighting output	Permanent
LED pcs	12 pcs
Finish	Brushed/polished stainless steel

Switch	Auto photo sensor
Operation time	Minimum 12 hrs (fully charged) 4-8 hrs (overcast)
Full charge time	6 hrs (direct sunlight)

There is an art to good lighting



SH200C

- ground light

Size	Top diameter: 2.7" / 69 mm Bottom diameter: 2.4" / 60 mm H: 2.2" / 55 mm
Weight	0.25 kg / 0.55 lbs
Housing	Stainless Steel (SUS304), cast aluminum
Lens	GE super light permeable PC
Lighting output	Permanent
LED pcs	4 pcs
Finish	Brushed/polished stainless steel

Switch	Auto
Operation time	Minimum 12 hrs (fully charged) 4~8 hrs (overcast)
Full charge time	6 hrs (direct sunlight)

SH220C

- ground light

Size	Top diameter: 5.56" / 141 mm Bottom diameter: 3.94" / 100 mm H: 2.56" / 65 mm
Weight	0.95 kg / 2.09 lbs
Housing	Stainless Steel (SUS304), cast aluminum
Lens	Anti-skid reinforced glass
Lighting output	Permanent
LED pcs	6 pcs
Finish	Brushed/polished stainless steel

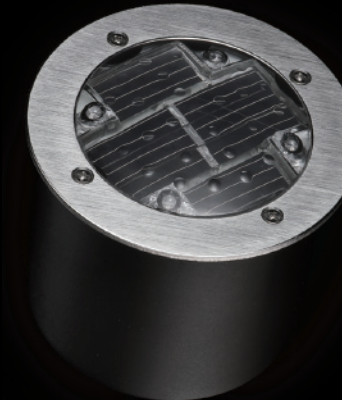
Switch	Auto
Operation time	Minimum 12 hrs (fully charged) 4~8 hrs (overcast)
Full charge time	6 hrs (direct sunlight)

SH230C

- ground light

Size	Diameter: 6.89" / 175 mm H: 4.86" / 124 mm
Weight	1.71 kg / 3.76 lbs
Housing	Stainless Steel (SUS304), cast aluminum
Lens	Anti-skid reinforced glass
Lighting output	Permanent
LED pcs	6 pcs
Finish	Brushed/polished stainless steel

Switch	Auto
Operation time	Minimum 12 hrs (fully charged) 4~8 hrs (overcast)
Full charge time	6 hrs (direct sunlight)



SH200C
Color - Lux (average)
White - 25, Amber - 25, Red - 50,
Blue - 20, Green - 55

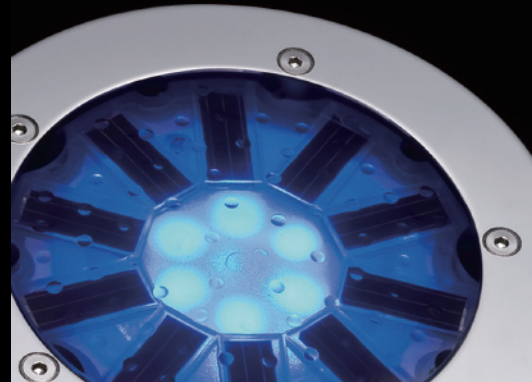
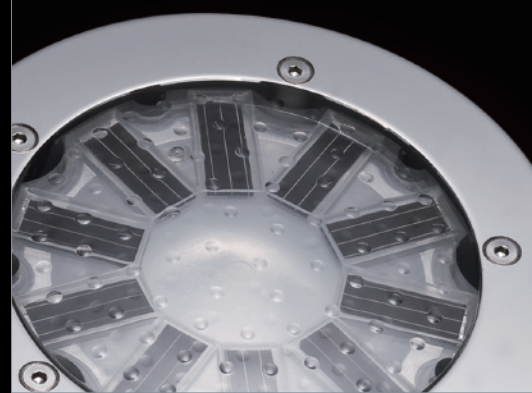


SH220C
Color - Lux (average)
White - 100, Amber - 120,
Red - 120, Blue - 35, Green - 200

SH230C
Color - Lux (average)
White - 60, Amber - 45, Red - 40,
Blue - 30, Green - 95



SH-220C
Triangle Park, Houston, TX



SH270C
Color - Lux (average)
White - 90, Amber - 100, Red - 95,
Blue - 60, Green - 160

SH270C

- ground light

Size	Top diameter: 4.4" / 112 mm Bottom diameter: 3.83" / 97.5 mm H: 2.4" / 61 mm
Weight	0.45 kg / 1 lbs
Housing	Stainless Steel (SUS304), cast aluminum
Lens	GE super light permeable PC
Lighting output	Permanent
LED pcs	6 pcs
Finish	Brushed/polished stainless steel

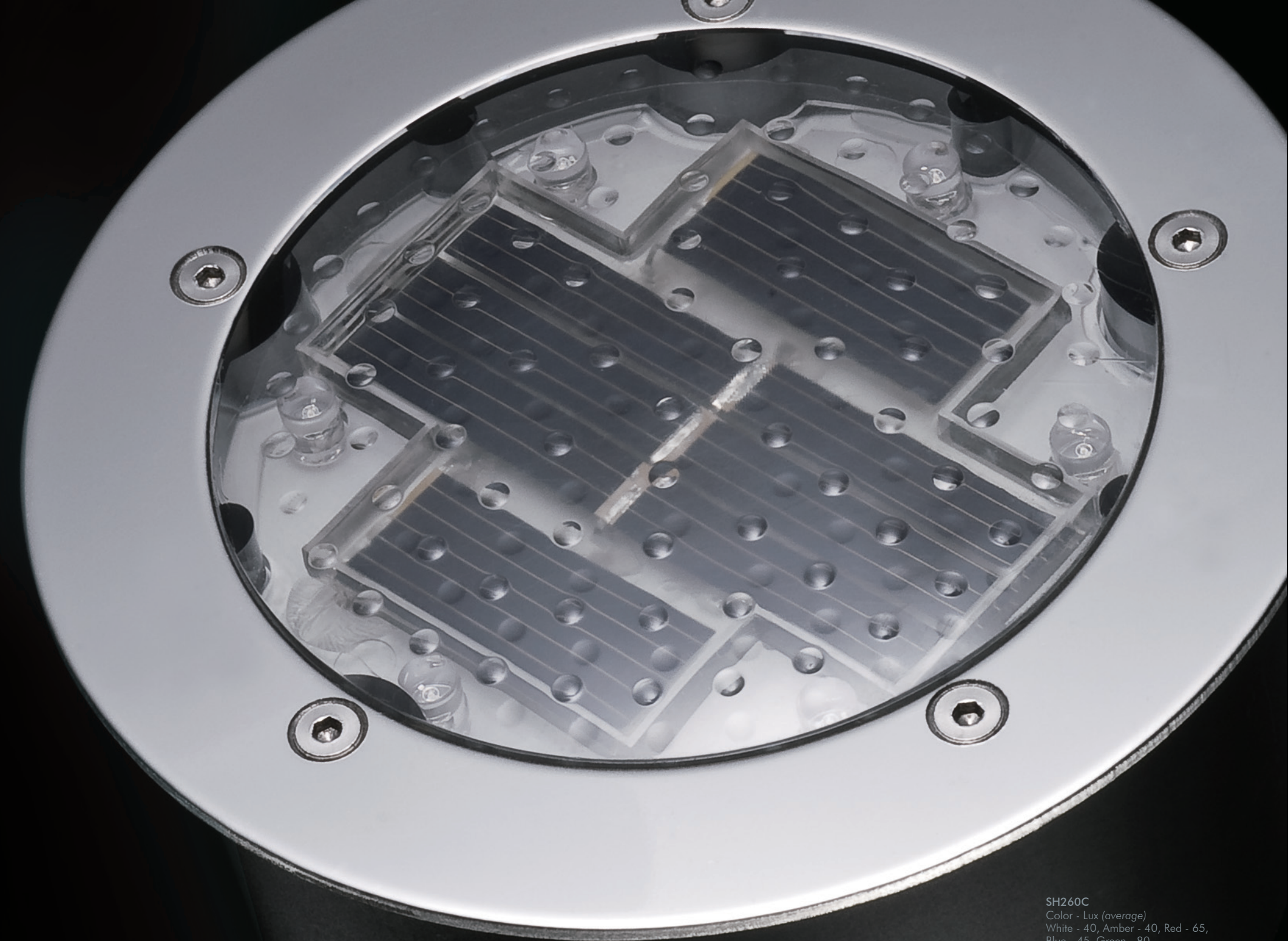
Switch	Auto
Operation time	Minimum 12 hrs (fully charged) 4~8 hrs (overcast)
Full charge time	6 hrs (direct sunlight)

SH260C

- ground light

Size	Top diameter: 4.4" / 112 mm Bottom diameter: 3.83" / 97.5 mm H: 2.4" / 61 mm
Weight	0.45 kg / 1 lbs
Housing	Stainless Steel (SUS304), cast aluminum
Lens	GE super light permeable PC
Lighting output	Permanent
LED pcs	6 pcs
Finish	Brushed/polished stainless steel

Switch	Auto
Operation time	Minimum 12 hrs (fully charged) 4~8 hrs (overcast)
Full charge time	6 hrs (direct sunlight)



SH260C
Color - Lux (average)
White - 40, Amber - 40, Red - 65,
Blue - 45, Green - 80

Meteor - a name you can trust

Meteor is one of a few great names to sponsor the U.S. Department of Energy Solar Decathlon 2009 and 2011. National Renewable Energy Lab approved Meteor products prior to installation at the National Mall. Meteor has been the only lighting company to sponsor this event.

Official 2009 and 2011 Solar Decathlon Sponsors:

The American Institute of Architects, Applied Materials, BP, Honeywell, National Association of Home Builders, Pepco, Dell, Dow Corning, Lowe's, Schneider Electric, U.S. Green Building Council, Perkins & Wills, Meteor Solar LED Lighting.

The Solar Decathlon joins 20 college and university teams in a competition to design, build and operate the most attractive and energy-efficient solar-powered house. In Solar Decathlon 2009, Meteor installed 105 pcs SH-170 (35 red, 35 blue, 35 white) on the main thoroughfare of the National Mall. In Solar Decathlon 2011, Meteor premiered 80+ way-finding bollards on the thoroughfare of the solar village at the National Mall, West Potomac Park, in Washington DC. Meteor lights have also appeared in the houses of the following university teams: Rice University, Penn State, Team California, and University of Tennessee.

Award Winning Lights

Meteor has received coverage from major industry media outlets in the US due to its technological advancements in sustainable lighting.



2012 Product Innovation Award - Most Energy Efficient Use of SSL

Race Street Pier was recently re-launched as a new public park in a broader effort to re-envision Philadelphia's Waterfront. To ensure that the spectacular view under the Ben Franklin Bridge is enjoyed both during the day and night, more than 200 Meteor SH-180 Solar LED Paver Lights were embedded into the paving for added ambience while ensuring safety and security for the community. Incorporated for their convenience, the solar LED lights do not require wiring and are completely solar powered, thereby providing the most sustainable solution with zero energy usage.



2011 Product Innovation Award

Meteor is a proud winner of architectural SSL's first annual 'PIA' silver award in the Wallpacks/Bollards Category for the SP-030 solar illuminating bollard. Judges applauded the modular nature of the light making the unit ideal for retrofit projects.



2009 and 2011 Innovative Green Design Award

Meteor is a proud 2-time winner of New York House magazine's 'igda' competition in the Lighting Category. Meteor Lighting received the award for its ground/paver lights and SP-030 solar illuminating bollard in 2009 and 2011.



Wildlife Lighting Certification

In 2011, Meteor's amber and red ground and paver lights were selected by the Florida Fish and Wildlife Conservation Committee as safe for installation in the vicinity of turtle nesting beaches due to its low wavelengths with minimal affect on sea turtles.



National Mall, Washington DC



Point State Park, Pittsburgh, PA

Meteor solar powered LED lights are used for patios, driveways, pool decks, plazas, business centers, hotels, parks and malls. They are an ideal choice for landscape and architectural lighting, since they are easy to incorporate. Meteor allows architects and landscape artists to pursue their ideas and creativity while respecting natural surroundings.

Architectural Grade Material

Meteor lights are designed with practicality and resilience in mind. The fixtures are made of high quality SUS304 Stainless Steel and cast aluminum, a material that not only remains attractive after years of use, but is also exceedingly durable and resistant to corrosion and extreme temperatures.

Latest Power Storage Technology

Meteor ground and paver lights incorporate the highest quality EDLC ultracapacitors available, extending the product lifespan an additional 2-3 years to a total of 7-10 years. Meteor bollard lights incorporate Sanyo eneloop batteries featuring 1500 charge cycles with minimal self discharge. Meteor products offer longevity and stability with the latest power storage technologies.

Perfect Ingress Protection Rating

The Ingress Protection (IP) rating system classifies the degree of protection provided by enclosures against the intrusion of solid objects, dust and particles, and liquids. Meteor ground and paver lights are rated IP-68, the highest possible, making them completely safe for use in areas of heavy rain, dust, or other intrusive elements.

Ease of Installation & Maintenance

Meteor lights are so easy to install that neither trenching nor re-paving is required. With no wiring or transformer needed, one can also save on the cost of hiring an electrician. When it is time to replace the main lighting unit for Meteor ground and paver lights, simply unscrew the anti-theft screws; the same applies to replacing the battery in Meteor bollards. Up to 95% recyclable, Meteor offers a recycling service when the light is ready to retire after 7-10 years.

Anti-Theft Design

Meteor ground and paver lights come with anchor plates which firmly anchor lights to the ground so they do not protrude above the surrounding area over time. The anchor plate, which also acts as a theft-deterrent, is essential in areas with subsurface water levels, uneven settling of soil, erosion, etc.

Uses and Applications

Patios	Fountains	Malls	Campus
Driveways	Lawns	Cruise ship	Parks
Walkways	Gardens	Sidewalks	Landscaping
Pool Decks	Rooftop Garden	Crosswalks	Roadway Lighting
Stairways	Plazas	Bridges	



ILOS Corporation *(North American Distributor)*
19745 Colima Road #1-807
Rowland Heights, CA 91748-3219
P (213) 255 2060
F (213) 596 3704
www.meteor-lighting.com